

**DENIS**  **CIMAF**®

# DAF

**SKID STEER-MOUNTED  
EQUIPMENT CARRIER  
SELECTION GUIDE**



| MANUFACTURER/MODEL NUMBER | DAF 150 | DAF 180D | DAF 180E | DAF 225E | DAF 225EX | DAF 250EX |
|---------------------------|---------|----------|----------|----------|-----------|-----------|
| <b>ASV</b>                |         |          |          |          |           |           |
| VT-70                     | X       |          |          |          |           |           |
| RT-75                     | X       |          |          |          |           |           |
| RT-110                    |         | X        |          |          |           |           |
| RT-120                    |         | X        |          |          |           |           |
| RT-135                    |         | X        |          |          |           |           |
| <b>BRON</b>               |         |          |          |          |           |           |
| 275                       |         |          |          |          | X         |           |
| 490                       |         |          |          |          |           | X         |
| 590                       |         |          |          |          |           | X         |
| 700                       |         |          |          |          |           | X         |
| <b>BANDIT</b>             |         |          |          |          |           |           |
| BTC-150                   |         |          |          | X        |           |           |
| BTC-300                   |         |          |          |          | X         |           |
| <b>BARKO</b>              |         |          |          |          |           |           |
| 930B                      |         |          |          |          |           | X         |
| 937B                      |         |          |          |          |           | X         |
| <b>BOBCAT</b>             |         |          |          |          |           |           |
| T650                      | X       |          |          |          |           |           |
| T66                       | X       |          |          |          |           |           |
| T76                       | X       |          |          |          |           |           |
| T740                      | X       |          |          |          |           |           |
| T770                      | X       |          |          |          |           |           |
| T870                      |         | X        |          |          |           |           |
| <b>CAT</b>                |         |          |          |          |           |           |
| 259D3                     | X       |          |          |          |           |           |
| 279D3                     | X       |          |          |          |           |           |
| 289D3                     |         | X        |          |          |           |           |
| 299D2                     |         | X        |          |          |           |           |
| 299D2 XHP                 |         | X        |          |          |           |           |
| 299D3                     | X       |          |          |          |           |           |
| 299D3 XE                  |         | X        |          |          |           |           |
| 299D3 XE LM               |         | X        |          |          |           |           |
| <b>CASE</b>               |         |          |          |          |           |           |
| TR270B                    | X       |          |          |          |           |           |
| TR310B                    | X       |          |          |          |           |           |
| TR340B                    | X       |          |          |          |           |           |
| TR370B                    | X       |          |          |          |           |           |
| TR450B                    | X       |          |          |          |           |           |
| TR620B                    |         | X        |          |          | X         |           |
| <b>CMI</b>                |         |          |          |          |           |           |
| C175                      |         | X        | X        |          |           |           |
| C300                      |         |          |          |          | X         |           |
| C400L                     |         |          |          |          |           | X         |
| C475                      |         |          |          |          |           | X         |



WWW.LAMTRAC.COM

TR 612

MADE IN  
USA  
1500000

NEW  
1500000

| MANUFACTURER/MODEL NUMBER | DAF 150D | DAF 180D | DAF 180E | DAF 225E | DAF 225EX | DAF 250EX |
|---------------------------|----------|----------|----------|----------|-----------|-----------|
| <b>FECON</b>              |          |          |          |          |           |           |
| FTX-100                   |          | X        |          |          |           |           |
| FTX150                    |          | X        |          |          |           |           |
| FTX200                    |          |          |          | X        |           |           |
| FTX300                    |          |          |          |          |           | X         |
| <b>GEHL</b>               |          |          |          |          |           |           |
| RT255                     | X        |          |          |          |           |           |
| <b>HYDROAX</b>            |          |          |          |          |           |           |
| 621E                      |          | X        |          |          |           |           |
| 721E                      |          |          | X        |          |           |           |
| <b>JCB</b>                |          |          |          |          |           |           |
| 210T H                    | X        |          |          |          |           |           |
| 215T                      | X        |          |          |          |           |           |
| 250T                      | X        |          |          |          |           |           |
| 270T                      | X        |          |          |          |           |           |
| 300T                      | X        |          |          |          |           |           |
| 320T                      | X        |          |          |          |           |           |
| 325T                      | X        |          |          |          |           |           |
| <b>JOHN DEERE</b>         |          |          |          |          |           |           |
| 323D                      | X        |          |          |          |           |           |
| 325G                      | X        |          |          |          |           |           |
| 329D                      | X        |          |          |          |           |           |
| 331G                      | X        |          |          |          |           |           |
| CT332                     | X        |          |          |          |           |           |
| 333D                      | X        |          |          |          |           |           |
| 333G                      | X        |          |          |          |           |           |
| <b>KUBOTA</b>             |          |          |          |          |           |           |
| SLV75                     | X        |          |          |          |           |           |
| SLV75-2                   | X        |          |          |          |           |           |
| SLV90                     | X        |          |          |          |           |           |
| SLV90-2                   | X        |          |          |          |           |           |
| SLV97-2                   |          | X        |          |          |           |           |
| <b>LAMTRAC</b>            |          |          |          |          |           |           |
| LTR6125                   |          | X        |          |          |           |           |
| LTR6140                   |          | X        |          |          |           |           |
| LTR6160T                  | X        |          |          |          |           |           |
| LTR6170                   |          | X        |          |          |           |           |
| LTR8300T                  |          |          |          |          | X         |           |
| LTR8400T                  |          |          |          |          |           | X         |
| LTR400Q                   |          |          |          |          |           | X         |
| LTR9610Q                  |          |          |          |          |           | X         |
| <b>NEW HOLLAND</b>        |          |          |          |          |           |           |
| C238                      | X        |          |          |          |           |           |
| C245                      | X        |          |          |          |           |           |
| C327                      | X        |          |          |          |           |           |



DANGER 300  
STAND CLEAR

DENIS CIMA  
MAX-PRO

| MANUFACTURER/MODEL NUMBER | DAF 150D | DAF 180D | DAF 180E | DAF 225E | DAF 225EX | DAF 250EX |
|---------------------------|----------|----------|----------|----------|-----------|-----------|
| <b>NEW HOLLAND (CONT)</b> |          |          |          |          |           |           |
| C332                      | X        |          |          |          |           |           |
| C334                      | X        |          |          |          |           |           |
| C337                      | X        |          |          |          |           |           |
| C345                      | X        |          |          |          |           |           |
| <b>PRIMETECH</b>          |          |          |          |          |           |           |
| PT-175                    |          |          | X        |          |           |           |
| PT-300                    |          |          |          |          | X         |           |
| PT-475                    |          |          |          |          |           | X         |
| <b>PRINOTH</b>            |          |          |          |          |           |           |
| RAPTOR 300                |          |          |          |          | X         |           |
| RAPTOR 320R               |          |          |          |          | X         |           |
| RT400                     |          |          |          |          |           | X         |
| RAPTOR 500                |          |          |          |          |           | X         |
| RAPTOR 800                |          |          |          |          |           | X         |
| <b>RAYCO</b>              |          |          |          |          |           |           |
| C100                      | X        |          |          |          |           |           |
| C120                      |          | X        |          |          |           |           |
| C200                      |          |          | X        |          |           |           |
| C275                      |          |          |          |          | X         |           |
| T415                      |          |          |          |          |           | X         |
| <b>SUPERTRAK</b>          |          |          |          |          |           |           |
| SK140 TR-C                |          | X        |          |          |           |           |
| SK140 CTLS-C              |          | X        |          |          |           |           |
| SK140 CTL-C               |          | X        |          |          |           |           |
| SK-140                    |          | X        |          |          |           |           |
| SK-170                    |          |          |          | X        |           |           |
| SK-190 RTL                |          |          |          | X        |           |           |
| <b>TAKEUCHI</b>           |          |          |          |          |           |           |
| TL8R2                     | X        |          |          |          |           |           |
| TL10V2                    | X        |          |          |          |           |           |
| TL12R2                    |          | X        |          |          |           |           |
| TL12V2                    |          | X        |          |          |           |           |
| <b>TEREX</b>              |          |          |          |          |           |           |
| PT-110                    |          | X        |          |          |           |           |
| <b>TIGERCAT</b>           |          |          |          |          |           |           |
| M726G                     |          |          |          |          |           | X         |
| <b>VOLVO</b>              |          |          |          |          |           |           |
| MCT110C                   | X        |          |          |          |           |           |
| MCT110D                   | X        |          |          |          |           |           |
| MCT125D                   | X        |          |          |          |           |           |
| MCT125C                   | X        |          |          |          |           |           |
| MCT135D                   | X        |          |          |          |           |           |
| MCT135C                   | X        |          |          |          |           |           |
| <b>WEILER</b>             |          |          |          |          |           |           |
| M860                      |          |          |          |          |           | X         |

# Blades

**For DAH, DAF and DER drum mulchers**

using the right blade for the right job and keeping the edge very sharp on your blades. At this moment, the B-size rotors have only one blade option available. Hammers require less time to maintain but will need more power.

## What blades should I use?

You should make a choice of blade according to the conditions you are most likely to face during your work.

**I S1 Blades (Basic)**  
Part number: 806537RY  
High-quality, high carbon alloy steel. Good general application.

**II S2 Blades (Carbide Layer)**  
Part number: 806538RY  
High-quality, high carbon alloy steel with laser applied tungsten carbide layer. Good general application especially in abrasive soils.

**III S3 Blades (Impact resistant)**  
Part number: 806504RY  
High impact and shock resistant tool hardened using various heat treatments. Use where risk of impact is higher.

**IV S4 Blades (Best All-around Tool)**  
Part number: 805552RY  
High impact and shock resistant tool hardened using various heat and chemical treatments. Best all-around tool

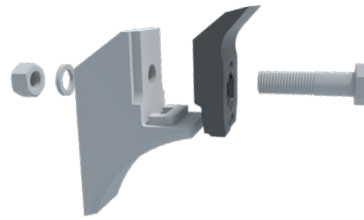
**V S5 Blades (Abrasion Resistant)**  
Part number: 805946RY  
High impact and shock resistant tool. hardened with a special triple treatment.

**IT C1 and C2 Hammers (Spike/Flat)**  
Part number: 806096RY or 806539RY  
High-quality, high carbon alloy steel with welded carbide hammer heads. Best used if the head is often exposed to rock or soil.

**B-type Blades**

**I B1 Blades (V-back)**  
Part number: 807357RY  
High-quality, high carbon alloy steel. Good general application. The V-back shape helps with impact resistance.

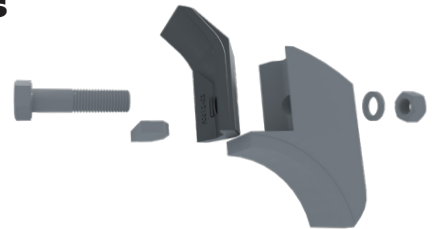
## C, D, E blade holders



Compatible with S-type Blades and the C-type carbides

## B blade holders

Compatible with B-type Blades.



**IMPACT Resistant**



**ABRASION Resistant**



**COLD/HEAT Resistant**



Recommended for stringy material like palmettos



Recommended for cold climates



Recommended for sand rich soils



Recommended for rock/debris rich soils



Lower cost per blade



Well-balanced blade for general uses



Maintenance time reduced / More power required

**LET'S CLEAR THE WAY!**

**DENIS**  **CIMA**<sup>®</sup>

4255 E. Lincoln Way • Wooster, OH 44691-8601 • [www.deniscimaf.com](http://www.deniscimaf.com)  
Sales, Parts and Service: 800.392.2686 or 330.264.8699 • Fax: 330.264.3697

Updated 9/20/2022