



SMARTER WAYS TO WORK™



## GS SERIES

Ground Preparation  
Attachment for Skid Steers



The GS Series is a multi-use manual skid steer attachment engineered to clear terrain, de-compact the toughest hardpan, and level soil in preparation for seedbed planting. Scarifiers work in combination with the finish rake to prepare the soil up to 5" deep. Its design and durability make it one of the most versatile attachments you will ever own. It is ideal for clearing vegetation and is more than capable of handling all of the ground preparation finesse work around concrete edges and walkways, without damaging it, and leaving a smooth finished seedbed.

### Key User Benefits:

**Speed** – Makes short work of clearing terrain, de-compacting, and leveling ground in preparation for seeding or sod with far fewer labor hours than Harley rakes or hand work.

**Ease of Use** – The GS Series is an attachment with scarifiers to rip the ground and a rake that work together to create the ideal seedbed, especially along edges. Clear site lines make edge working a breeze. The operator has complete control of the unit to do the finest detail work. With all of the functionality built into this attachment the tedious and back breaking task of hand work can be eliminated.

**Toughness** – Forged steel, cast iron, AR steel, welded construction—everything from the frame, to the foam filled tires is engineered to take a pounding and continue to perform. With no complicated and expensive hydraulically powered rotating parts, the GSM65 is the toughest tool on the jobsite.

**Maintenance** – The ingenious design of the GS Series makes maintenance fast and simple. The wear components are either bolted or pinned in place for fast and easy replacement. Plus many of the components are common throughout the unit requiring minimal inventory.

**Results** – Perfectly graded ground with soil de-compacted up to 5" deep means your seed has the best environment for germination and developing a healthy, deep root system. And you did it in less than half the time of your competitors.

**Save Time, Space and Money** – When one tool can clear brush, de-compact the soil, and leave a smooth and level seedbed, you save space on the trailer, save time by not switching implements, and save money by owning and maintaining just the one tool that can do it all.

*As the inventor of the HydroSeeder®, we know a thing or two about soil preparation. Our ground preparation tools are designed to provide the best results and ensure that your planting efforts are rewarded with lush, thick, green lawns. Remember with FINN® – we deliver Smarter Ways to Work.*

### Features and Benefits

- Provides an optimal environment for germination and developing a healthy, deep root system
- Clear site lines for edge work
- Forged steel, cast iron, AR steel and welded construction
- Wear components bolted or pinned in place for fast and easy replacement
- All-in-one tool saves you space, time and money

### Use it for:

- Ground prep for seeding or sod with far fewer labor hours
- Clearing Grass, Brush, Small Trees and more
- Gravel Driveway Leveling and Resurfacing
- Grubbing
- Rock Clearing

### Applications



Landscape Contractors



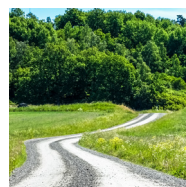
Residential Construction



Excavation



Driveway / Sidewalk Contractors



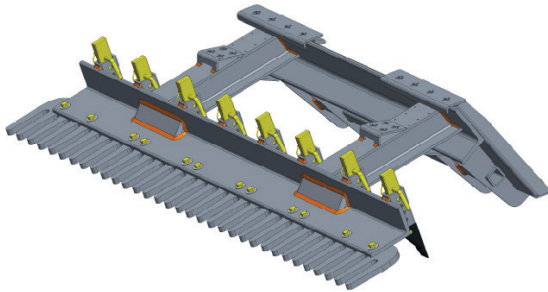
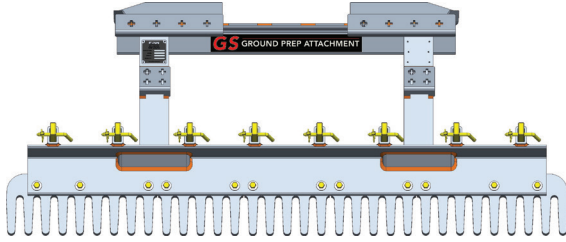
Gravel Road Maintenance

## GS Series

### Ground Preparation Attachment

### Technical Specifications

#### GS Series Skid Steer Attachment



<b>Vehicle</b>	<b>GSM65</b>
<b>Mode of Transportation</b>	Skid Steer
<b>Recommended HP. Range</b>	30 - 60
<b>Skid Steer Mount</b>	Universal
<b>Hydraulic Ports Needed</b>	0
<b>Tool Dimensions</b>	
<b>Overall</b>	78 in. Wide x 38-1/2 in. Deep x 19 in. High
<b>Raking Width</b>	78 in.
<b>Scarifying Width</b>	66 in.
<b># of Scarifiers</b>	8
<b>Hydraulic Scarifiers</b>	No
<b>Scarifier Spacing</b>	9 - 10 in.
<b>Scarifying Depth</b>	0 - 5 in.
<b>Tool Construction</b>	
<b>Frame</b>	Heavy Duty I-Beam & Angle Iron welded construction
<b>Finish Rake</b>	3/4" Abrasion Resistant (AR) Steel
<b>Scarifying Tip</b>	Bolt-on Cast Iron
<b>Color</b>	Black
<b>Weight</b>	460 lbs



9281 LeSaint Drive | Fairfield, OH 45014-5457  
Toll Free 800.543.7166 | 513.874.2818

Follow us on: [f](#) [t](#) [in](#) [@](#)  
[www.FINNcorp.com](http://www.FINNcorp.com)